



ACQUISITION

Date / time 2026-07-03 16:21:19
 Location 41.6109, -62.8371
 Place North Atlantic Ocean
 Sensor WS300
 Channels WS300-X · WS300-Y · WS300-Z

SPECIFICATIONS

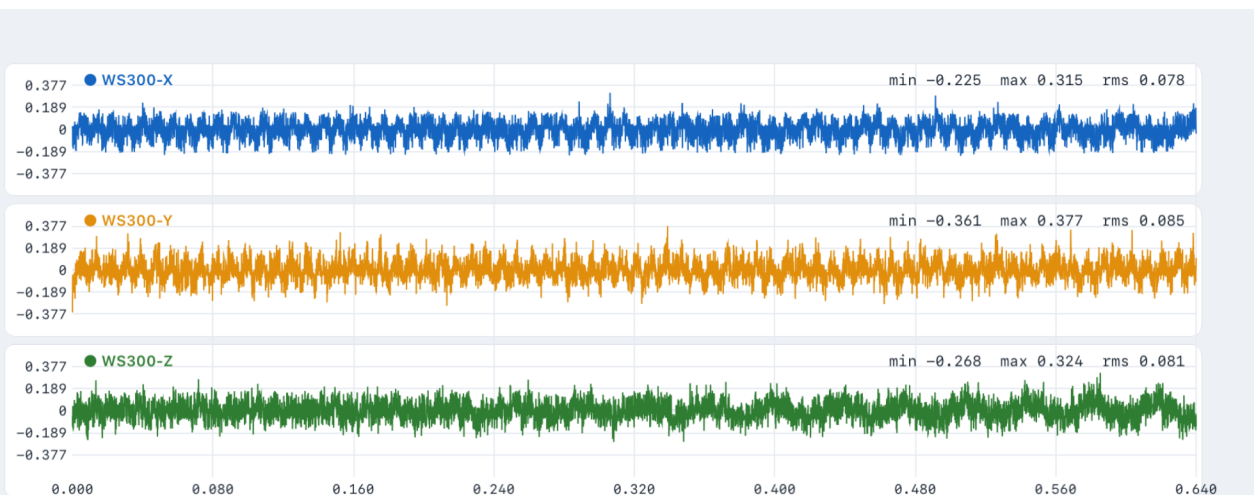
Sample rate 12.8 kHz
 Points 8192
 Duration 0.64 s
 Fmax 5.00 kHz
 Window Hanning
 Frequency Data State Acceleration

CHANNEL STATISTICS

CHANNEL	RMS	MIN	MAX	MEAN
WS300-X	0.078	-0.225	0.315	0.000
WS300-Y	0.085	-0.361	0.377	0.000
WS300-Z	0.081	-0.268	0.324	0.000

TIME SERIES · STACKED PER CHANNEL

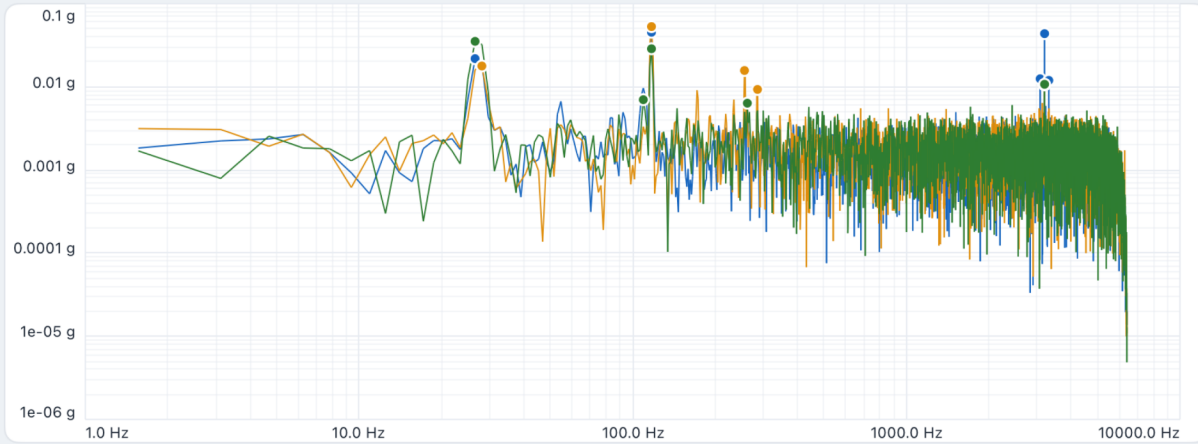
Acceleration / velocity vs time





FREQUENCY SPECTRUM · STACKED (Y-LINEAR); OVERLAID IN LOG-LOG

Amplitude vs frequency (peaks marked)



Window: Hanning · Fmax: 5.00 kHz · Resolution: 1.56 Hz

FREQUENCY PEAKS · TOP 5 PER CHANNEL (FREQUENCY + AMPLITUDE PER CH...

WS300-X

WS300-Y

WS300-Z

WS300-X Freq (Hz)	WS300-X Amp (g)	WS300-Y Freq (Hz)	WS300-Y Amp (g)	WS300-Z Freq (Hz)	WS300-Z Amp (g)
117.19	0.04536	117.19	0.05305	26.56	0.03525
3200.00	0.04365	28.12	0.01782	117.19	0.02870
26.56	0.02183	256.25	0.01572	3200.00	0.01073
3082.81	0.01250	3200.00	0.01055	109.37	0.00701
3317.19	0.01196	285.94	0.00931	262.50	0.00636

RMS (from spectrum)

0.07808

0.08391

0.07951